

Atlantic Supreme

Advanced Technology Windows & Doors



HomeCraft
WINDOWS



(919) 231-7181 • HomeCraftWindows.com

Engineered Features You Can Expect

Double-Hung Window Features and Benefits

Heavy Walled Construction:
0.080" thick walls

Deeply Pocketed Head:
With weatherstripping to resist air infiltration

7/8" Insulating Glass:
With optional Low 'E' coating specifically chosen for maximum regional thermal efficiency

Dual Tilt In Sashes:
Both sashes tilt in for easy cleaning

Die Cast Cam Lock and Keeper:
Cam action actually draws sash closer together for positive lock

Interlocking Meeting Rail:
Integral interlock provides additional security.

Three Layers of Weather Stripping:
With double mylar fins for resistance to air and water infiltration

Flexible Bulb Seal:
Provides a superior high performance weather seal like a refrigerator door

Positive Sloped Sill:
Provides water runoff, even in driving rain

Fusion Welded Frame and Sash:
The utmost in strength and integrity

Warm Edge Technology:
Low-Conductivity spacer provides barrier to heat transfer in insulating Glass unit

Night Vent Latch:
Allows for ventilation with security.

Low Profile Routed-in Tilt Latches:
Color matched low profile latches for a neat appearance

Composite Reinforcement:
For maximum strength and thermal efficiency

Optional Fiberglass Insulation:
In frame and sash to improve thermal performance

Stainless Steel Constant Force Balance:
Trouble free, maintenance free. Provides smooth operation

Fully Welded Double Wall Interior Dam Leg:
With fin-seal weatherstripping for improved strength and optimal air and water performance.

Storm Interlock:
Integral sill and meeting rail lock and prevents sash from bowing under structural stress.

Double Hung Tilt-In Window Systems:

The ultimate in vinyl window technology, both frame and sash parts of our window systems are fusion welded. No screws, no gaps, just outstanding performance and ENERGY STAR efficiency in an exceptional slim-line window design.

- Half screens standard; Optional full screens also available.
- Companion Bows, Bays, Casements, Patio Doors and Architectural Shapes.

Color Options

Standard solid color Ivory White or Optional Desert Tan; Natural Oak or Cherry interior Wood Grain with Ivory White or Desert Tan exterior; Bronze or Cocoa exterior over Ivory White interior.

2 Lite & 3 Lite Sliders

- Sashes lift out for easy cleaning. But for added security, only lift out from the inside.
- Heavy duty tandem brass rollers allow for easy operation.
- Independent weep holes for excellent drainage.
- Sashes have equal-size glass for an appealing appearance. (2 lite only)



UltraFlect...The Top Performing Dual Glass Option

UltraFlect Achieving An R-Value of 5.00

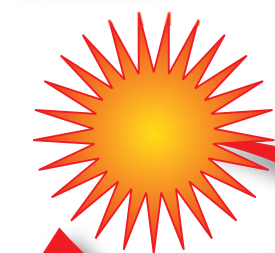
Only **UltraFlect*** combines proven technologies in high tech glass coatings, spacer systems, and gas filling to produce the most thermally efficient heat reflective and durable insulated glass package:

3 layers of Silver Oxide (11 total layers) Protected inside the dry air space. Specially formulated and positioned to best reflect sun's rays outside.

1 ceramic layer of Tin Oxide permanently bonded into the glass surface. Specially formulated and positioned to best reflect heat energy from your furnace inside.

Keeps Summer Heat Outside

Keeps Winter Heat Inside



Duralite™

Duralite® warm edge spacer system seals glass unit and insulates the edge.

Argon Gas fill provides an insulation barrier.

FURNACE

*** Optional**

Independent Laboratory Test Results

U-Factor = 0.22

• SHGC = 0.18

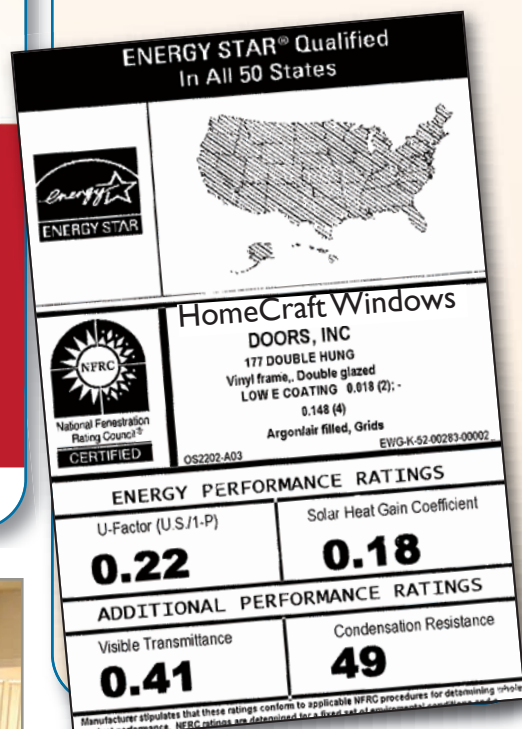
• VT = .41

Standard UltraFlect exceeds all ENERGY STAR qualifications, including the new standards that went into effect January 2010, and is eligible for a federal tax credit under Section 25C

WARNING: Some companies quote center-of-glass or other U-Factor and Solar Heat Gain Coefficients. (Some don't even know the difference, Don't be fooled!)

ASK TO SEE THE NFRC RATING STICKER, and COMPARE.

*** Optional**



State-of-the-Art in Performance Glass Technologies

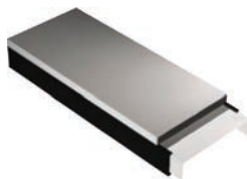
Value

The Atlantic Supreme R-5, double pane window represents state of the art design in window systems, among the most advanced in the industry. We offer styles and options to fit any architectural requirements – both contemporary and classic. We build to a quality level achieved from years of experience and back it with our Lifetime Limited Warranty.

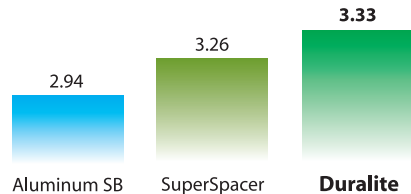
Duralite™ Spacer System

To ensure your home will be comfortable during the intense heat of summer and the frigid winds of winter upgrade your new windows and doors to our high performance glass package with Duralite™.

- Lowest conductivity warm edge spacer
- Improved condensation resistance
- Superior argon gas retention
- Unique patented design
- Exceeds ENERGY STAR requirements

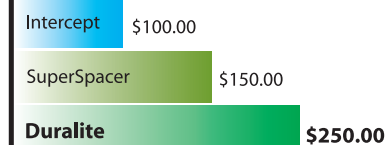


The Higher the Number the Greater the Savings! (Total Window R-Value)



Total Window R-value
Duralite can improve the total window R-value
Warmer window R-values makes you feel more comfortable.

Average Annual Savings Compared to Spacer Bar (Dollars of Energy Savings*)



Energy Savings
Duralite improves the total window R-value which reduces heat loss and saves money on energy bills.

* Your savings may differ, based on the cost of fuel or the type of windows in your home.

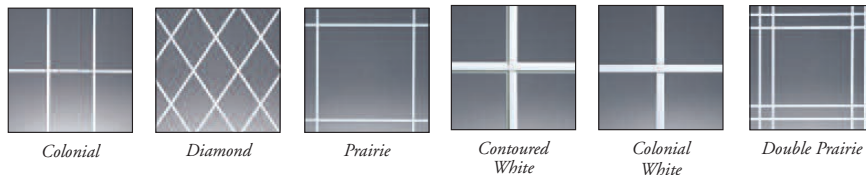
Decorative Options

Solid PVC Color and Interior Woodgrain Laminates



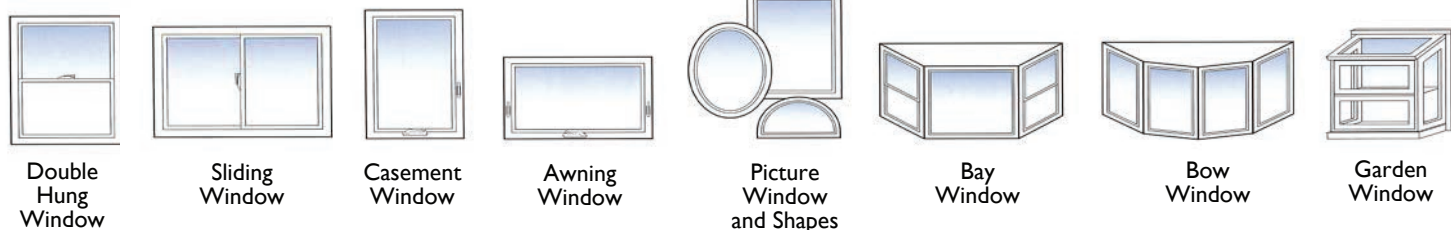
A variety of optional exterior colors are available

Interior Grids



All grids are enclosed within the insulated glass unit –making glass cleaning a breeze.

Window Types



HomeCraft

WINDOWS

3048 Barrow Drive • Raleigh, NC 27616

(919) 231-7181

homecraftwindows.com



“We proudly install Earthwise Windows”

Authorized Dealer: