

# 177-R5 Ultimate

Advanced Technology Windows & Doors



HomeCraft

WINDOWS



(919) 231-7181 • [HomeCraftWindows.com](http://HomeCraftWindows.com)



# Engineered Features You Can Expect

## Double-Hung Window Features and Benefits

**Heavy Walled Construction:**  
0.080" thick walls

**Deeply Pocketed Head:**  
With weatherstripping to resist air infiltration

**7/8" Insulating Glass:**  
With optional Low 'E' coating specifically chosen for maximum regional thermal efficiency

**Dual Tilt In Sashes:**  
Both sashes tilt in for easy cleaning

**Die Cast Cam Lock and Keeper:**  
Cam action actually draws sash closer together for positive lock

**Interlocking Meeting Rail:**  
Integral interlock provides additional security.

**Three Layers of Weather Stripping:**  
With double mylar fins for resistance to air and water infiltration

**Flexible Bulb Seal:**  
Provides a superior high performance weather seal like a refrigerator door

**Positive Sloped Sill:**  
Provides water runoff, even in driving rain

**Fusion Welded Frame and Sash:**  
The utmost in strength and integrity

**Warm Edge Technology:**  
Low-Conductivity spacer provides barrier to heat transfer in insulating Glass unit

**Night Vent Latch:**  
Allows for ventilation with security.

**Low Profile Routed-in Tilt Latches:**  
Color matched low profile latches for a neat appearance

**Composite Reinforcement:**  
For maximum strength and thermal efficiency

**Optional Fiberglass Insulation:**  
In frame and sash to improve thermal performance

**Stainless Steel Constant Force Balance:**  
Trouble free, maintenance free. Provides smooth operation

**Fully Welded Double Wall Interior Dam Leg:**  
With fin-seal weatherstripping for improved strength and optimal air and water performance.

**Storm Interlock:**  
Integral sill and meeting rail lock and prevents sash from bowing under structural stress.

## Double Hung Tilt-In Window Systems:

The ultimate in vinyl window technology, both frame and sash parts of our window systems are fusion welded. No screws, no gaps, just outstanding performance and ENERGY STAR efficiency in an exceptional slim-line window design.

- Half screens standard; Optional full screens also available.
- Companion Bows, Bays, Casements, Patio Doors and Architectural Shapes.

## Color Options

Standard solid color Ivory White or Optional Desert Tan; Natural Oak or Cherry interior Wood Grain with Ivory White or Desert Tan exterior; Bronze or Cocoa exterior over Ivory White interior.

## 2 Lite & 3 Lite Sliders

- Sashes lift out for easy cleaning. But for added security, only lift out from the inside.
- Heavy duty tandem brass rollers allow for easy operation.
- Independent weep holes for excellent drainage.
- Sashes have equal-size glass for an appealing appearance. (2 lite only)



# UltraFlect...The Top Performing Dual Glass Option

## UltraFlect Achieving An R-Value of 5.00

Only **UltraFlect\*** combines proven technologies in high tech glass coatings, spacer systems, and gas filling to produce the most thermally efficient heat reflective and durable insulated glass package:

3 layers of Silver Oxide (11 total layers) Protected inside the dry air space. Specially formulated and positioned to best reflect sun's rays outside.

1 ceramic layer of Tin Oxide permanently bonded into the glass surface. Specially formulated and positioned to best reflect heat energy from your furnace inside.

**Keeps Summer Heat Outside**

**Keeps Winter Heat Inside**



**Duralite™**

Duralite® warm edge spacer system seals glass unit and insulates the edge.

Argon Gas fill provides an insulation barrier.

**FURNACE**

\* **Optional**

### Independent Laboratory Test Results

**U-Factor = 0.22**  
 • **SHGC = 0.18**  
 • **VT = .41**

Optional UltraFlect exceeds all ENERGY STAR qualifications, including the new standards that went into effect January 2010, and is eligible for a federal tax credit under Section 25C

**WARNING:** Some companies quote center-of-glass or other U-Factor and Solar Heat Gain Coefficients. (Some don't even know the difference, Don't be fooled!)

**ASK TO SEE THE NFRC RATING STICKER, and COMPARE.**  
 \* **Optional**

**ENERGY STAR® Qualified**  
In All 50 States

**HomeCraft Windows DOORS, INC**  
177 DOUBLE HUNG  
Vinyl frame, Double glazed  
LOW E COATING 0.019 (2); -  
0.148 (4)  
Argon/air filled, Grids  
OS2202-A03 EWG-K-52-00283-00002

ENERGY PERFORMANCE RATINGS	
U-Factor (U.S./I-P)	Solar Heat Gain Coefficient
<b>0.22</b>	<b>0.18</b>
ADDITIONAL PERFORMANCE RATINGS	
Visible Transmittance	Condensation Resistance
<b>0.41</b>	<b>49</b>

Manufacturer stipulates that these ratings conform to applicable NFRC procedures for determining whole window performance. NFRC ratings are determined on a fixed set of environmental conditions.



# State-of-the-Art in Performance Glass Technologies

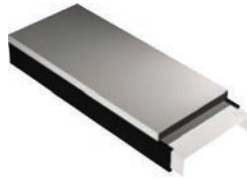
## Value

The I77 Ultimate R-5, double pane window represents state of the art design in window systems, among the most advanced in the industry. We offer styles and options to fit any architectural requirements – both contemporary and classic. We build to a quality level achieved from years of experience and back it with our Lifetime Limited Warranty.

## Duralite™ Spacer System

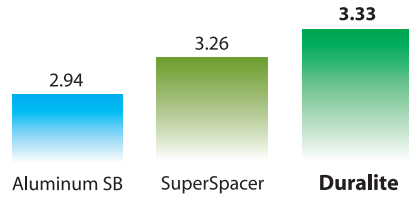
To ensure your home will be comfortable during the intense heat of summer and the frigid winds of winter upgrade your new windows and doors to our high performance glass package with Duralite™.

- Lowest conductivity warm edge spacer
- Improved condensation resistance
- Superior argon gas retention
- Unique patented design
- Exceeds ENERGY STAR requirements



## The Higher the Number the Greater the Savings!

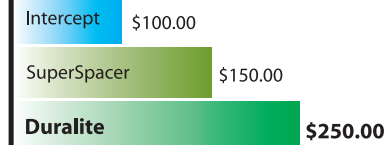
(Total Window R-Value)



**Total Window R-value**  
Duralite can improve the total window R-value  
  
Warmer window R-values makes you feel more comfortable.

## Average Annual Savings Compared to Spacer Bar

(Dollars of Energy Savings\*)



**Energy Savings**  
Duralite improves the total window R-value which reduces heat loss and saves money on energy bills.

\* Your savings may differ, based on the cost of fuel or the type of windows in your home.

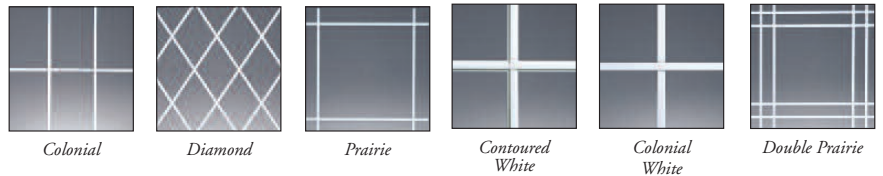
## Decorative Options

Solid PVC Color and Interior Woodgrain Laminates



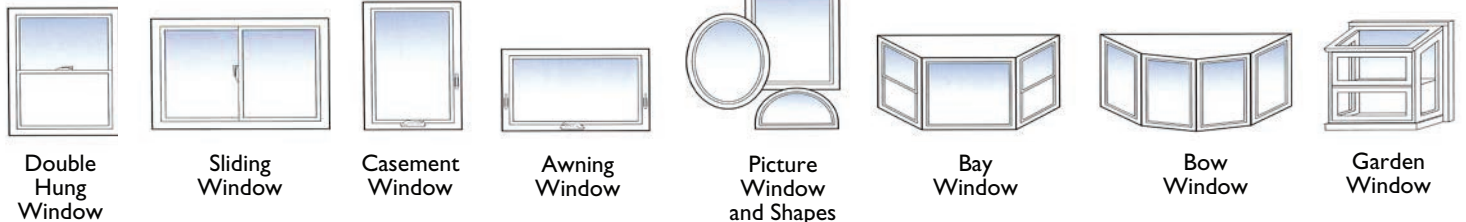
A variety of optional exterior colors are available

Interior Grids



All grids are enclosed within the insulated glass unit –making glass cleaning a breeze.

## Window Types



W I N D O W S

3048 Barrow Drive • Raleigh, NC 27616

**(919) 231-7181**

**homecraftwindows.com**



“We proudly install Earthwise Windows”

Authorized Dealer:

